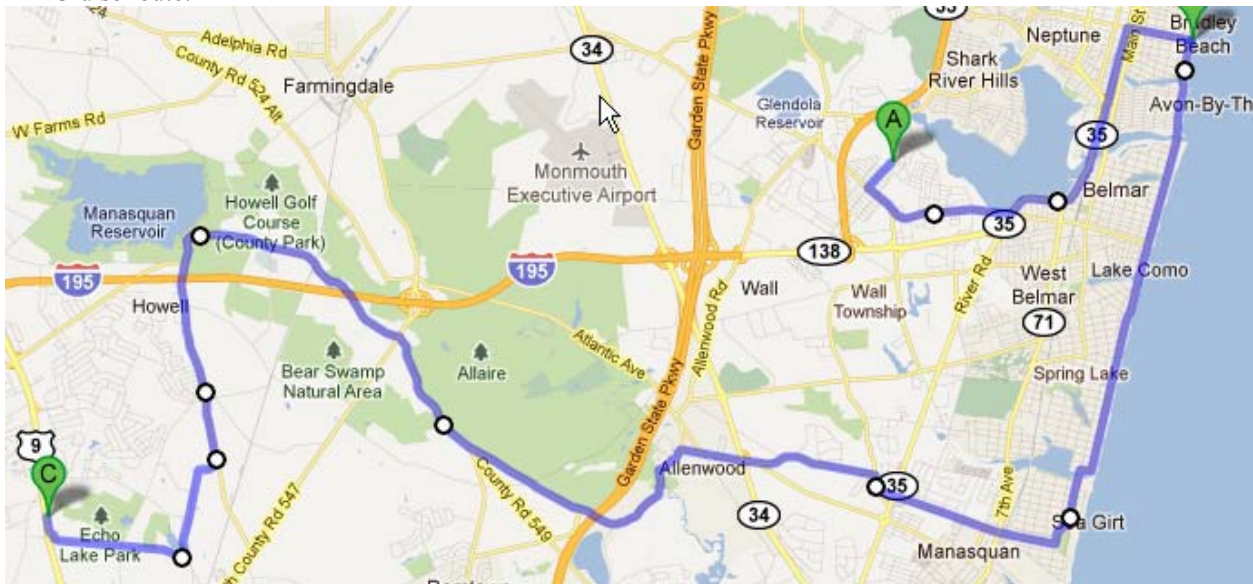


NJFBOA Cruise from Evans Area in Wall to Chick-Fil-A cruise night in Howell.

- The route was chosen to minimize difficult left turns, avoid traffic circles, avoid highways, avoid closed bridges, and to try to take a more interesting scenic route than I-195 to US-9. We will pass the beach/ocean area, farm land, Allaire State Park, and numerous streams and lakes, just as examples.
- Cruise is approximately 26 miles and should take roughly an hour
- We will meet at Evans Area at 2:45 PM. We will leave promptly at 3:15 PM
  - Evans Area
  - Monmouth Blvd in Wall 07719
  - (you can *try* Monmouth & 6<sup>th</sup> Ave in your GPS)
- We will end up at the Blue Moon Kruisers cruise night at Chick-Fil-A in Howell
  - Chick-Fil-A in Howell
  - 4881 US Highway 9
  - Howell, NJ 07731
- The goal is to reach Chick-Fil-A close to 4:30 pm so we can hopefully park together. The later we arrive, the harder that will be.
- Remember we are guests at the cruise and will follow all rules set by the host club.
- All club member cash donations to the Blue Moon Kruisers charities will be matched dollar for dollar up, to a cumulative total of \$100, which we will give it to the BMK that night. Let's do a little good. It would be really great if everyone chipped in a few bucks each to such a great cause. You can also bring canned goods for donation as well. Cash donations need to come through Scott (BonzoHansen) in order for the club to match.
- We will try to cruise in and park together if possible. We must follow the rules set by the host club
- Cruise route:



- In the event of rain, we will reschedule to Saturday 10/1, staying in line with the cruise night schedule.
- As always, there will be zero tolerance for any club member actions that puts NJFBOA in a bad light. So no speeding, acting up, etc. Of course we know this warning is not required but we wanted to mention it anyway.

## Starting Point – Evans Area in Wall

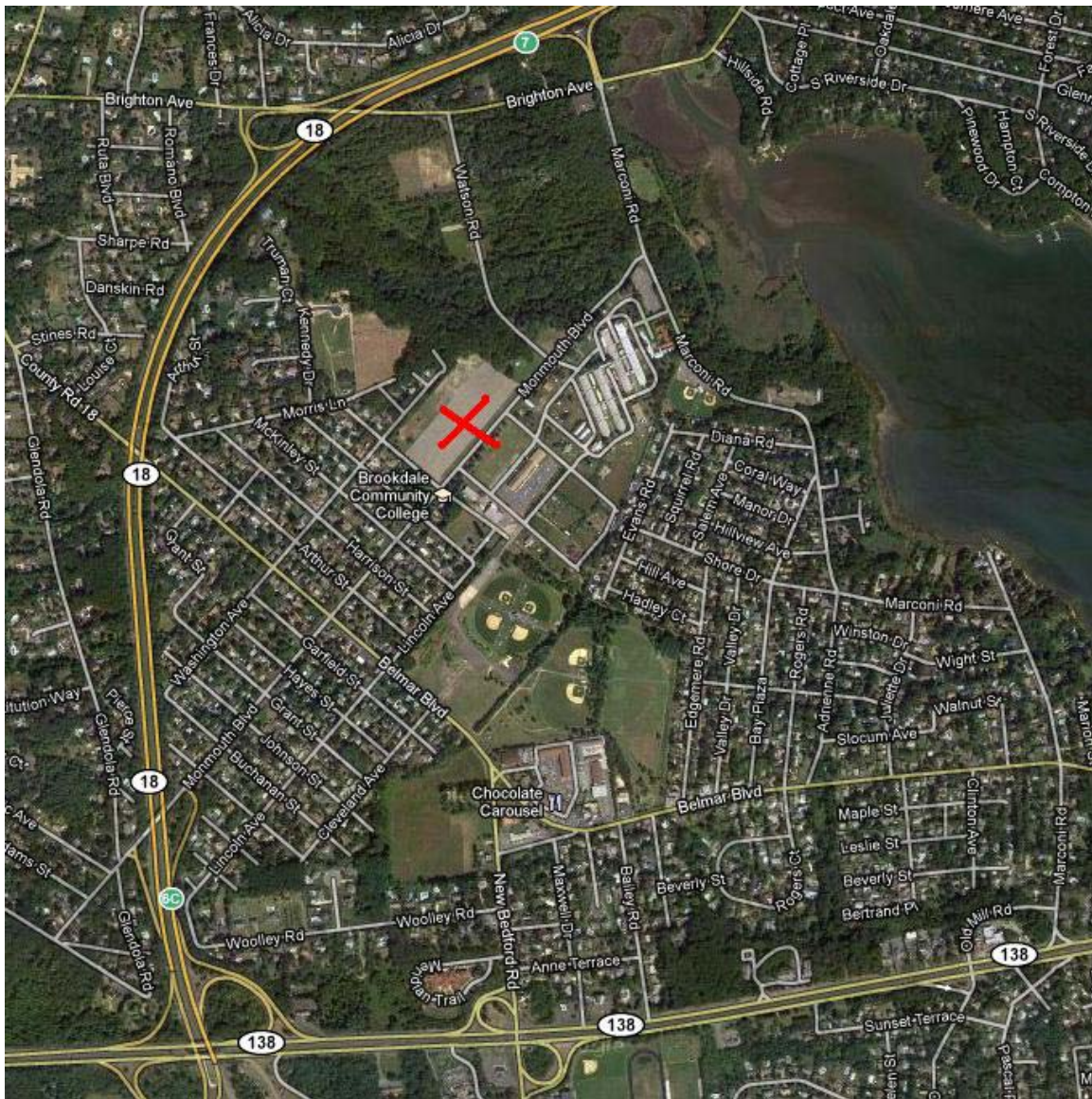


We are going to meet at the big parking lot of the former US Army base Evans Area.

What is Evans Area? It was a US Army research facility. Take a quick look at these links for a brief rundown of some of the history. I hear other interesting things went down there that are still classified. We are just meeting here; there is no tour, etc.

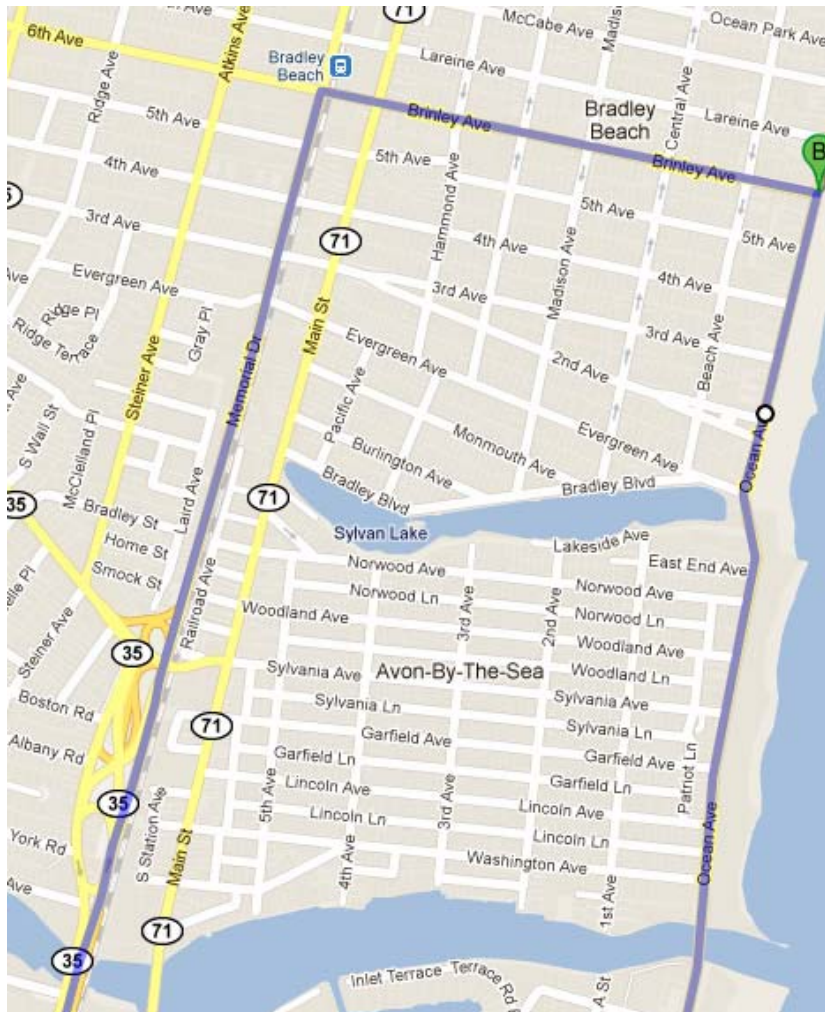
<http://www.infoage.org/>  
[http://en.wikipedia.org/wiki/Camp\\_Evans](http://en.wikipedia.org/wiki/Camp_Evans)

It is easy to get to off Belmar Blvd, via the GSP exit 98 to Rt 138, and off Rt 18

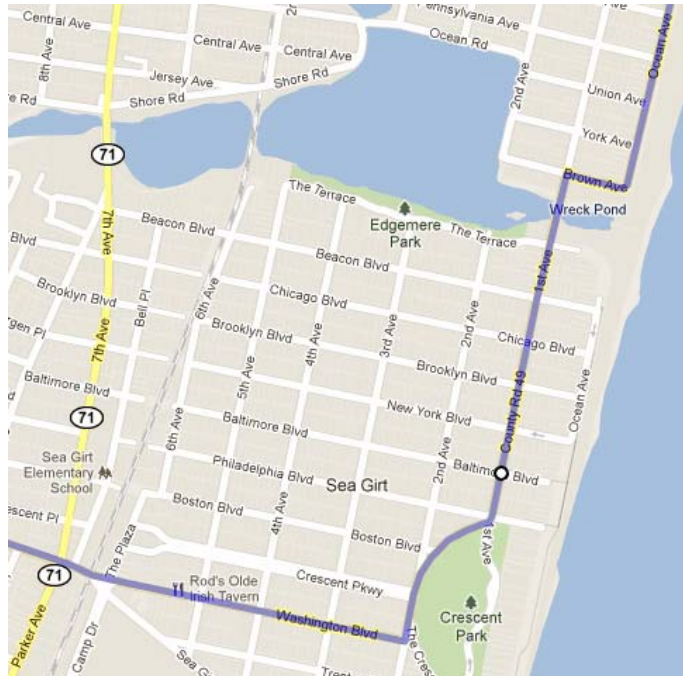


Cruise Directions:

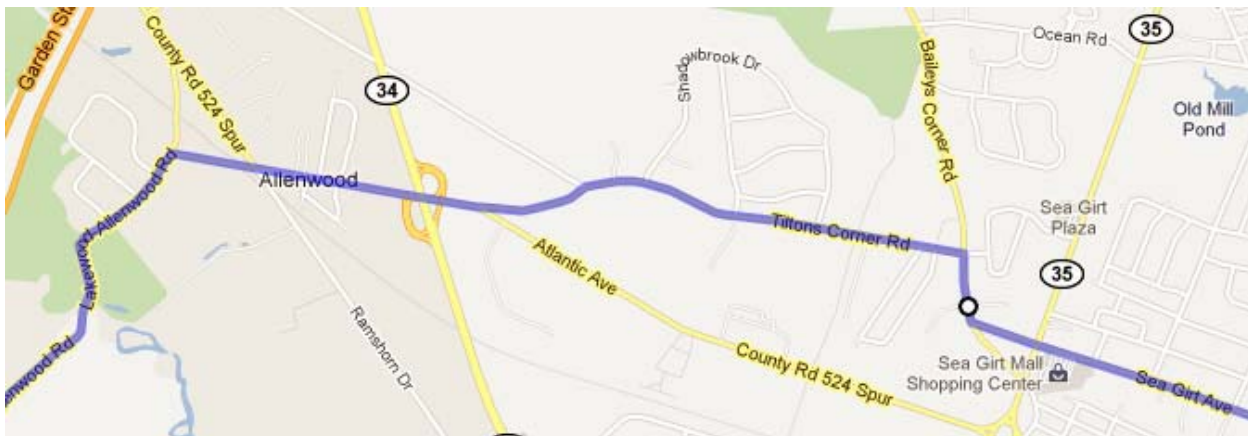
- Exit right out of Evans Area parking lot onto Monmouth Blvd. Note this is a 25 MPH residential area
- Left onto Belmar Blvd. This is one of only three uncontrolled lefts we are making and probably the hardest. There is no light so be careful. I believe there is enough shoulder on BB for the lead cars to wait.
- Take Belmar Blvd all the way to Rt 35 N. There is a Shell Station on the right.
- Turn left onto Rt 35 N
- Take Rt 35 N around the Shark River and head south over the bridge.
- Stay to the right on the bridge as we will go straight onto Memorial Drive.
  - Don't follow the left lane onto the overpass for RT 35 N.
  - If you miss it, fear not, Follow Rt 35N and make a right at the 1<sup>st</sup> light onto Steiner Ave, then make a right onto 6<sup>th</sup> Ave and you are back on the route.
- Take Memorial Drive to Bradley Beach. The light at the train station is 6th Ave/Brinley Ave.
- Make the right onto Brinley Ave
  - Take Brinley all the way to the beach.
- Turn right onto Ocean Avenue in Bradley Beach.
  - Ocean Ave is a 25 mph zone in the summer, so if your GPS says 35 mph ignore it (signs may not change right after Labor Day).
  - Remember pedestrians in walkways have the right of way so be prepared to stop anywhere on Ocean Ave.



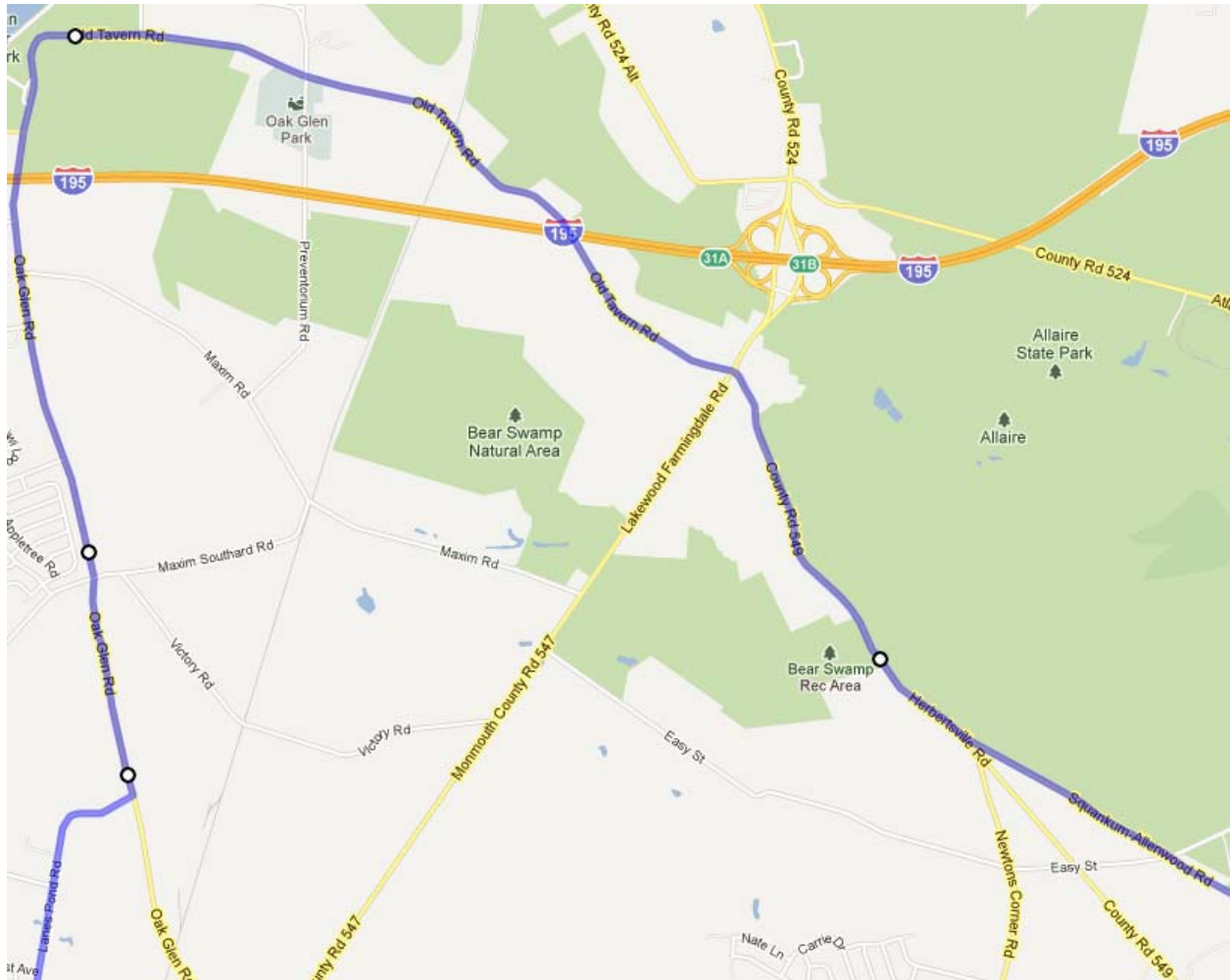
- When Ocean Ave ends in Sea Girt, bear right and then make the next left onto 1<sup>st</sup> Ave.
  - Watch your speeds
- 1<sup>st</sup> Ave bends around a park and then kind of forces you to make a left onto Washington Blvd/Sea Girt Ave.



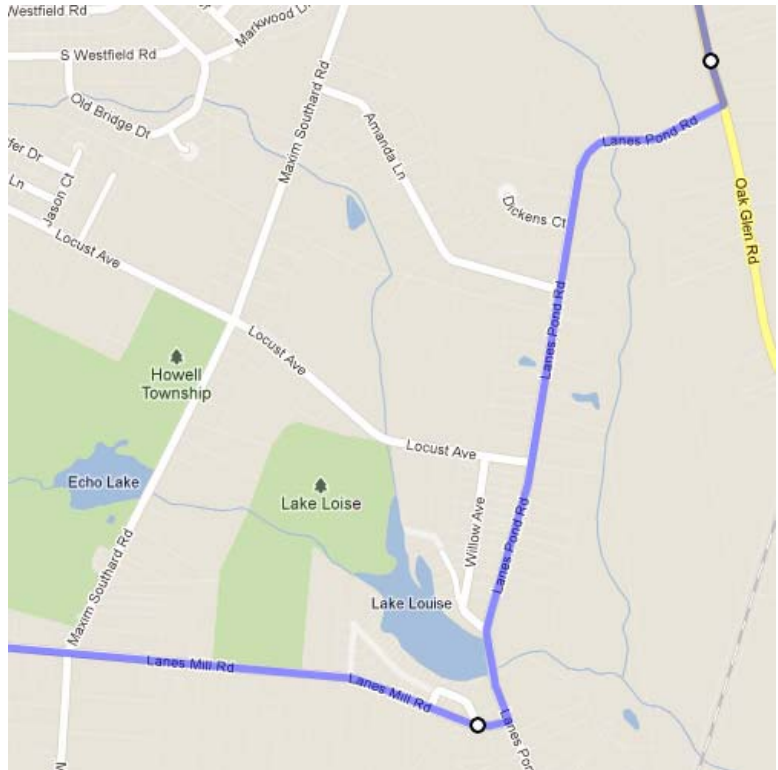
- Follow Sea Girt Ave across Rt 71 and Broad St, Manasquan, and across Rt 35 in Wall.
  - You will see a GMC/Buick Dealer on the left
- Turn right onto Baileys Corner Rd
- Take the 2nd left onto Tilttons Corner Rd
- Follow Tilttons Corner to the end. There is a stop sign and a firehouse is across the street.
- Make the right onto Atlantic Ave/County Rd 524 Spur
- Follow Atlantic Ave to the end: under Rt 34, past the blinking light, the bicycle trail and the Allenwood General Store.
- At the stop sign make a left onto Lakewood-Allenwood Rd



- Lakewood-Allenwood Rd becomes Squankum-Allenwood Rd after you cross the GSP.
- It then merges with Herbertsville Road and CR549 and becomes CR549. Squankum-Allenwood Rd has the right of way at the merge.
- Blewitts salvage yard is on your left after the merge
- When 549 comes to the traffic light at Lakewood-Farmingdale Road/CR547 it turns into Old Tavern Rd in Howell
- Stay straight through the light at Old Tavern Rd and CR547
- At the big left hand bend Old Tavern Rd becomes Oak Glen Rd



- Turn right onto Lanes Pond Rd
  - We were going to take Maxim Southard Rd but the bridge is out at Echo Lake
  - Watch your speed.
- After the lake Turn right onto Lanes Mill Rd



- Just before Rt 9 is the entrance to the mall where Chick-Fil-A is located.

